

How-To Guide for Remote Computer Mac OS Lab Using Windows

September 2020

Table of Contents

1	INSTALLING REAL VNC VIEWER SOFTWARE	3
1.1	COMPUTER REQUIREMENTS	3
1.2	INSTALLING REAL VNC VIEWER SOFTWARE.....	3
2	CONNECTING TO A LAB COMPUTER	8
A.	FREQUENTLY ASKED QUESTIONS.....	12
A.1	WHERE CAN I FIND MY LINK?	12
A.2	WHAT HAPPENS IF I CAN'T LOG IN?.....	12
A.3	WILL THERE BE COMPUTERS FOR MY CLASS?	12
A.4	WHAT DEVICES CAN I ACCESS THE LAB FROM?	12

1 Installing Real VNC Viewer Software

1.1 Computer requirements

- A Windows computer with an internet connection
- Download and install SAIT Global Protect VPN Client. Instructions for VPN are found [here](#)

1.2 Installing Real VNC Viewer Software

1. Connect to SAIT Global Protect VPN Client for [Windows](#).
2. Open a Web Browser and click on the [Remote Computer Lab Access Website](#).

Southern Alberta Institute of Technology
 REMOTE COMPUTER ACCESS

Computer Labs	CA200 - PC - Cont. Ed.	
CA200 - PC - Cont. Ed.	93 computers available	
KA021 - PC - IIET	IS220393	IS220393.acdm.ds.sait.ca Connect
KA216 - PC - PT	IS222110	IS222110.acdm.ds.sait.ca Connect
KA218 - PC - EET	IS220442	IS220442.acdm.ds.sait.ca Connect
KA229 - PC - Water Treatment	IS220450	IS220450.acdm.ds.sait.ca Connect
KA303 - PC - PT	IS222084	IS222084.acdm.ds.sait.ca Connect
KA309 - PC - PT	IS222072	IS222072.acdm.ds.sait.ca Connect
KA322 - PC - Drillsim	IS222086	IS222086.acdm.ds.sait.ca Connect
KA323 - PC - PT		
MC206 - PC - NMPD		
MC207 - PC - LIT		
MD110 - Mac - NMPD - FVP		
MD317 - PC - DBA		
NH409 - PC - PPD		
NK113 - PC - BGIS		

3. Find your computer lab classroom from the list provided. This will be the same classroom as your schedule from the Office of the Registrar.

Computer Labs	MD110 - Mac - NMPD - FVP	
KA322 - PC - Drillsim	32 computers available	
KA323 - PC - PT	ict221269.local	ict221269.acdm.ds.sait.ca Connect
MC206 - PC - NMPD	ict221275.local	ict221275.acdm.ds.sait.ca Connect
MC207 - PC - LIT	ict221273.local	ict221273.acdm.ds.sait.ca Connect
MD110 - Mac - NMPD - FVP >	ict221291.local	ict221291.acdm.ds.sait.ca Connect
MD317 - PC - DBA		
NH409 - PC - PPD		
NK113 - PC - BGIS		
NK116 - PC - GNT		
NK120 - PC - BGIS		
NK201 - PC - RGIS		

4. Once in your “Classroom” select a Mac Computer and click “Connect”

KA322 - PC - Drillsim			
KA323 - PC - PT			
MC206 - PC - NMPD			
MC207 - PC - LIT			
MD110 - Mac - NMPD - FVP >	MD110 - Mac - NMPD - FVP	32 computers available	
MD317 - PC - BDA	🍏 ict221269.local	ict221269.acdm.ds.sait.ca	Connect
NH409 - PC - PPD	🍏 ict221275.local	ict221275.acdm.ds.sait.ca	Connect
NK113 - PC - BGIS	🍏 ict221273.local	ict221273.acdm.ds.sait.ca	Connect
NK116 - PC - GNT			
NK120 - PC - BGIS	🍏 ict221291.local	ict221291.acdm.ds.sait.ca	Connect
NK201 - PC - BGIS			

5. Select the “Install RealVNC Viewer” link to download and install the software.

Connect to ict221275.local ✕

🖥️ → 🖥️


Connecting from Windows or Mac


1. Install **RealVNC Viewer**
2. Copy and paste the following address into the vnc viewer
ict221275.acdm.ds.sait.ca
3. Log in with your username and password


6. Select “Download VNC Viewer” to start installing the software


VNC® Connect consists of VNC® Viewer and VNC® Server


Download VNC® Viewer to the device you want to control from, below. Make sure you've installed VNC® Server on the computer you want to control.



Windows



macOS



Linux



Raspberry Pi



iOS


Android


Chrome


Solaris


HP-UX


AIX

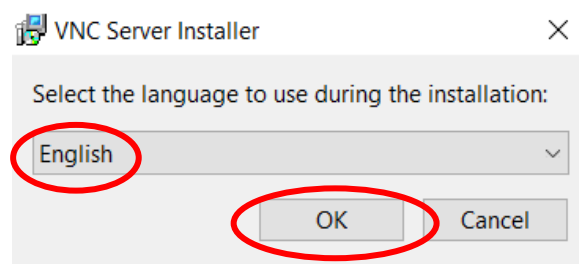
[Download VNC Viewer](#)

SHA-256: 6764e39303b4c49e8401e91878b1b26e3706ab5ffb4bac5f6e6334ecfe3363ae

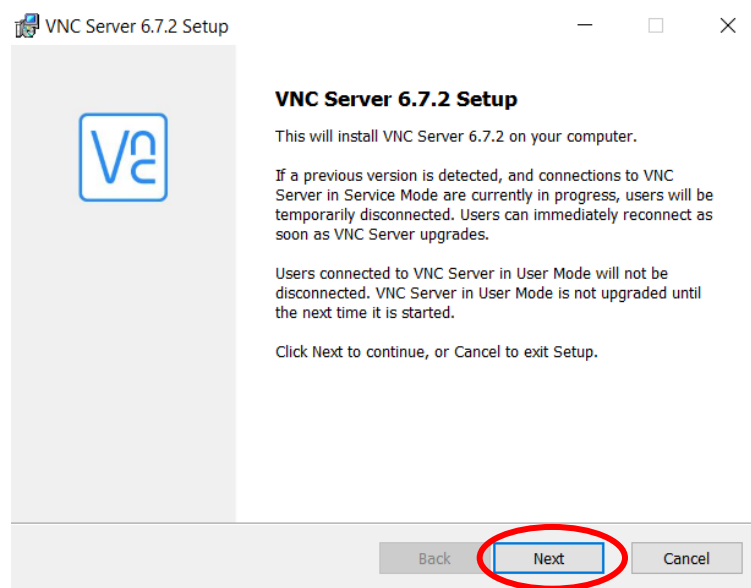
EXE x86/x64

Looking for VNC® Server?

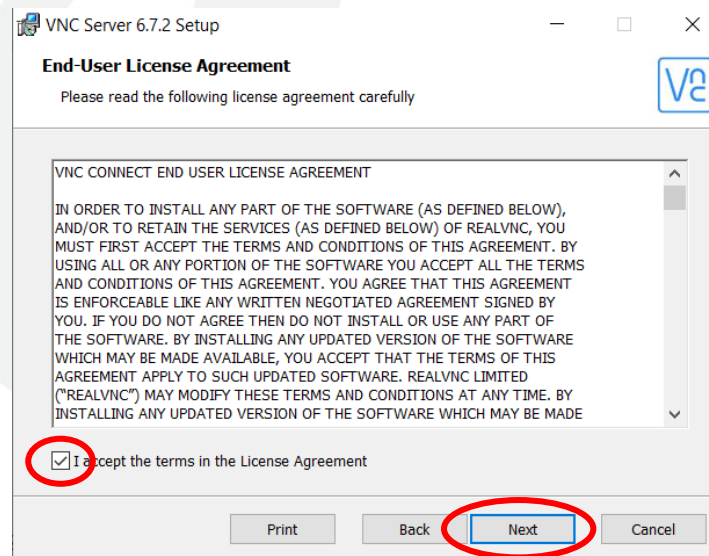
7. Select the language used during installation



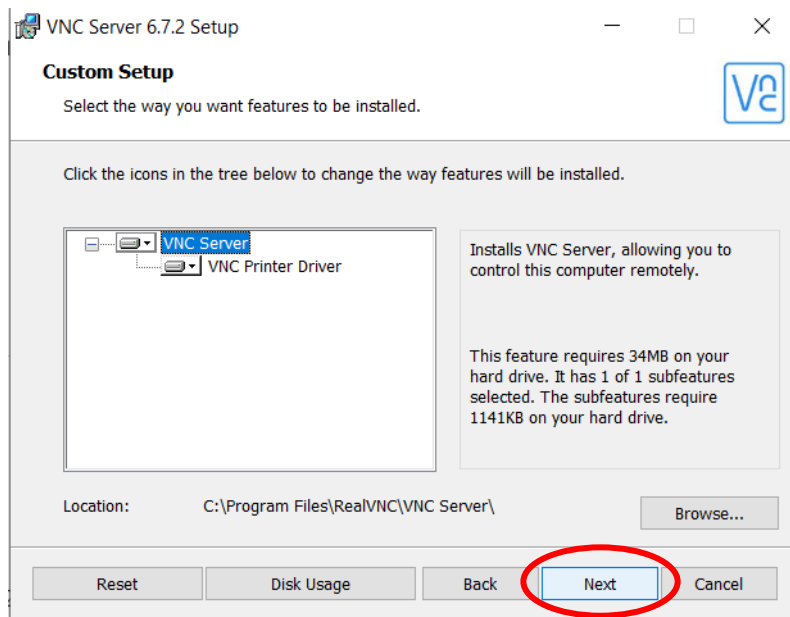
8. The VNC Setup Wizard will appear. Select "Next"



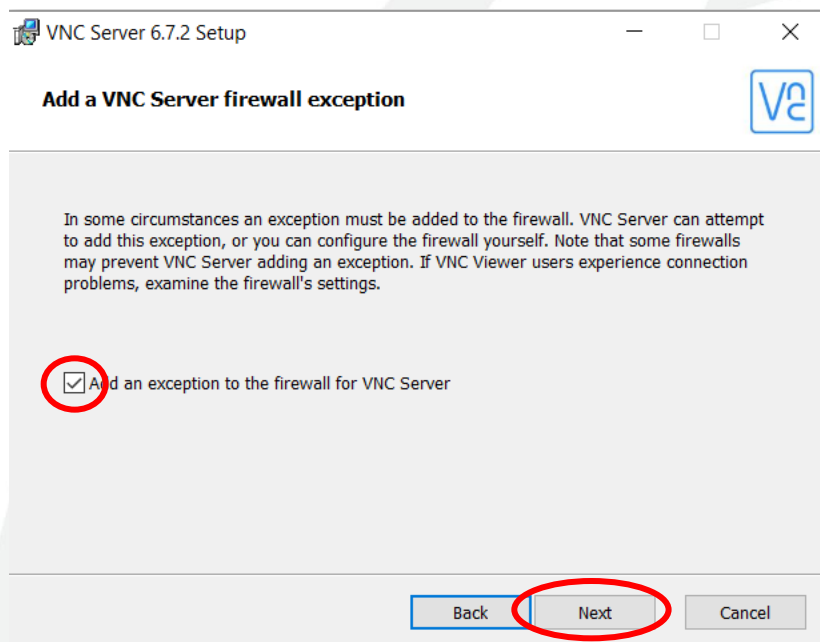
9. The User License Agreement window will display. Select the "Accept" the terms and select "Next"



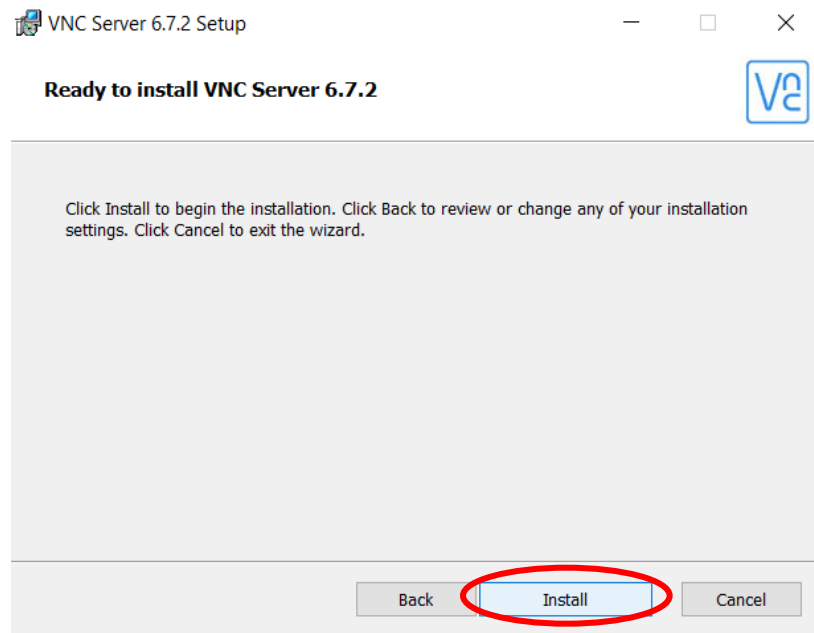
10. Select "Next"



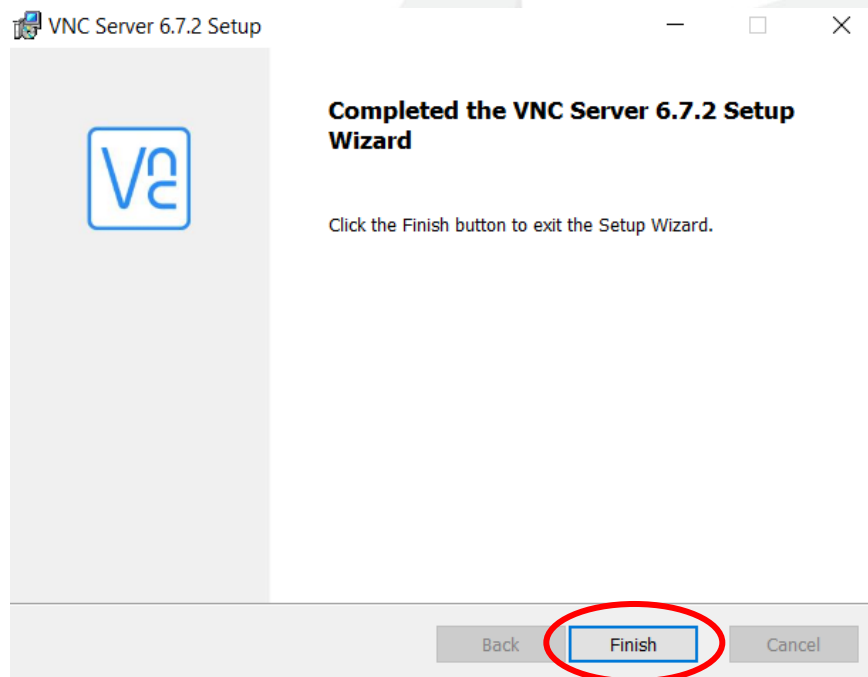
11. Ensure the firewall box is selected. Then click on "Next"



12. Select *“Install”* to finish installing the VNC software

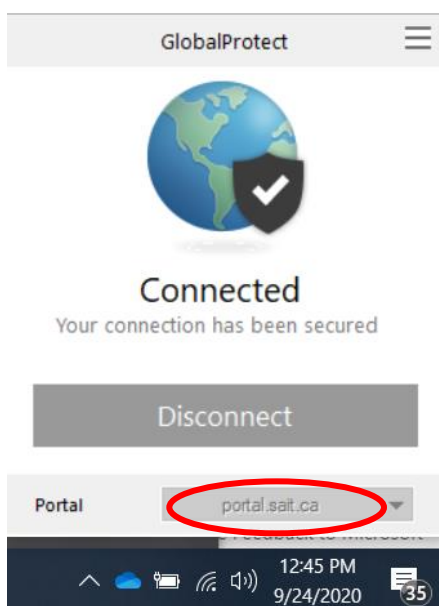


13. Select *“Finish”* to complete the installation

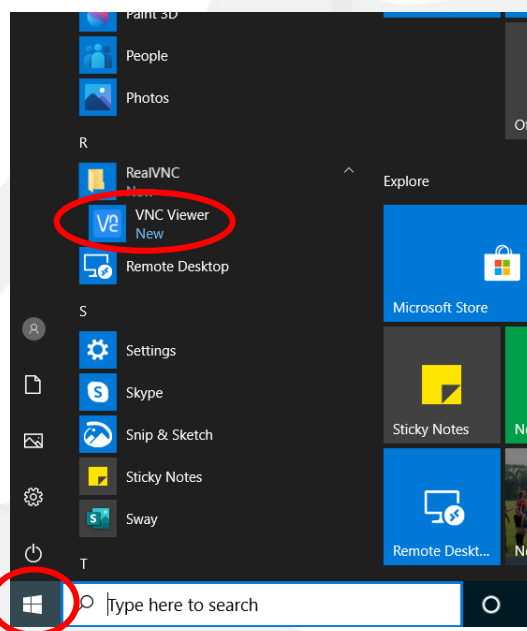


2 Connecting to a Lab Computer

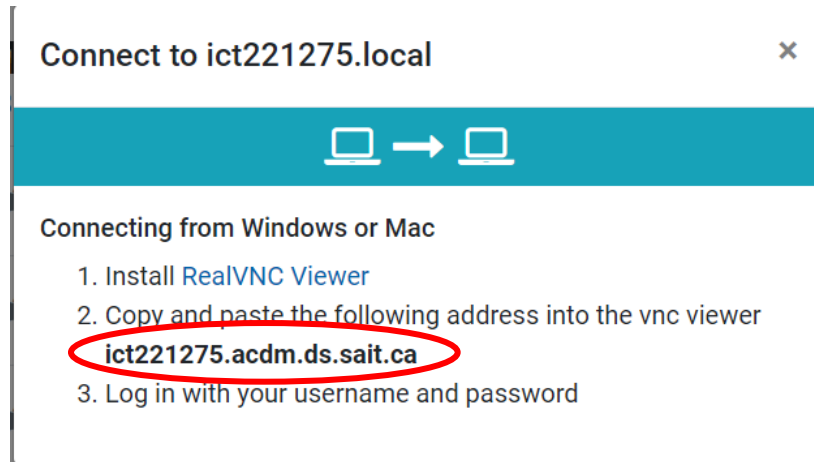
1. Connect to portal.sait.ca through [GlobalProtect VPN](#)



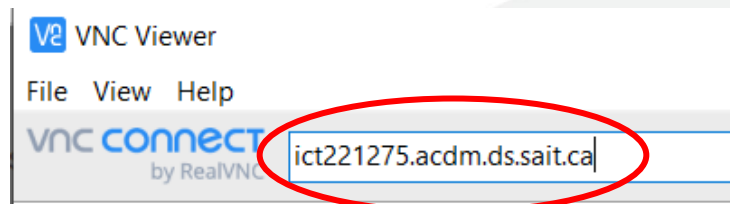
2. Open VNC Viewer app from the Windows menu



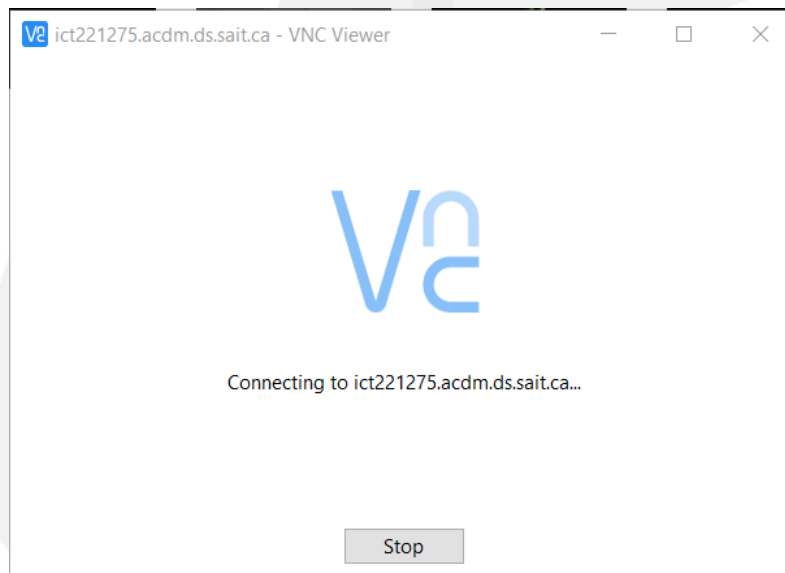
3. Copy the name of the computer that you want to connect too



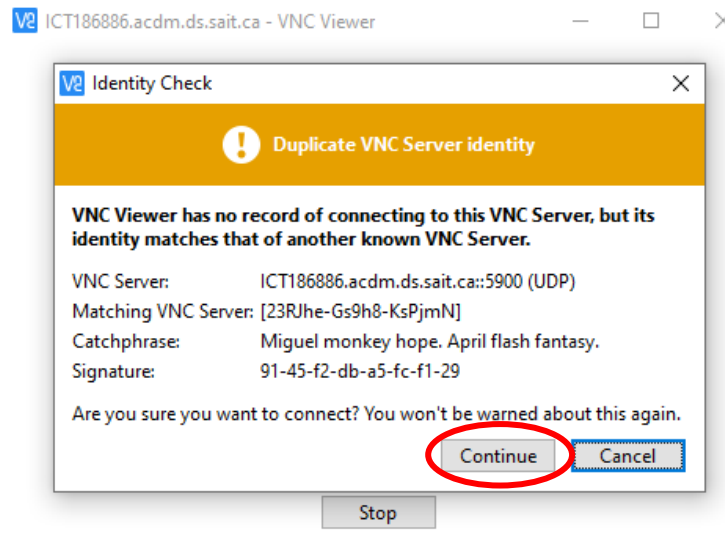
4. Paste the computer name in the connect window and click "Enter"



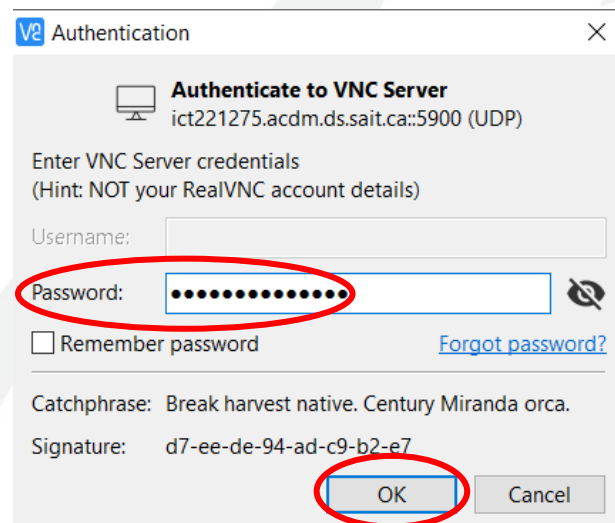
5. The screen will change as the connection is being established



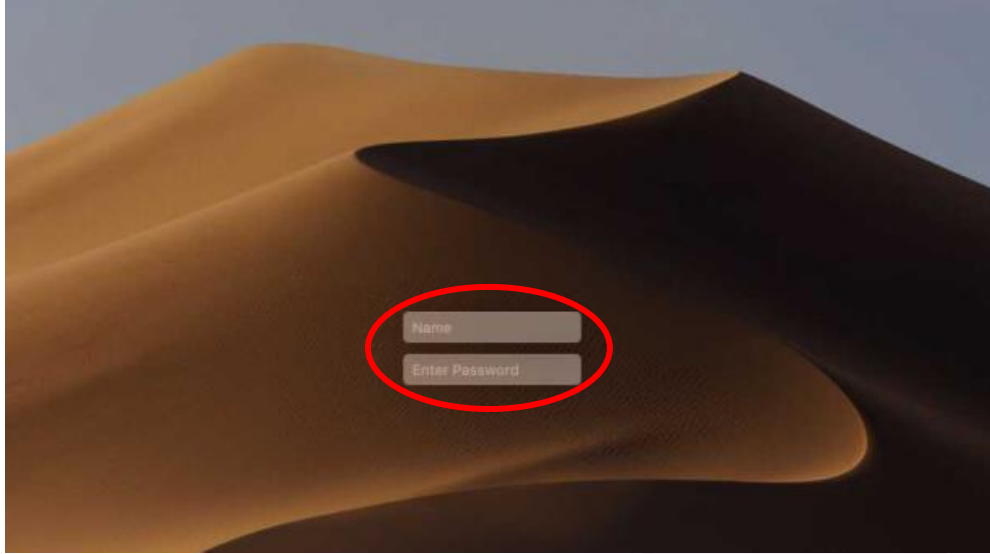
6. A warning may appear, select *“Continue”*. After logging in the server will remember the laptop that you are using



7. Enter *“SAIT@cc3ss2M@c”* as the password. Then select *“OK”*



8. The domain login screen will appear



9. Log in with your SAIT credentials

A. Frequently Asked Questions

A.1 Where can I find my link?

Your instructor will be providing you a link if you are required to use the computer labs remotely. There will be step-by-step instructions on how to log in and download the appropriate software.

A.2 What happens if I can't log in?

Please refer to the step-by-step instructions on how to download the appropriate app and log in. If more help is required contact helpline@sait.ca.

A.3 Will there be computers for my class?

Yes, the number of computers is based on class size. In order to access the computer, you prefer, it is recommended to login 10 minutes before class is set to begin.

A.4 What devices can I access the Lab from?

A laptop or desktop computer is recommended for Remote Computer Access.